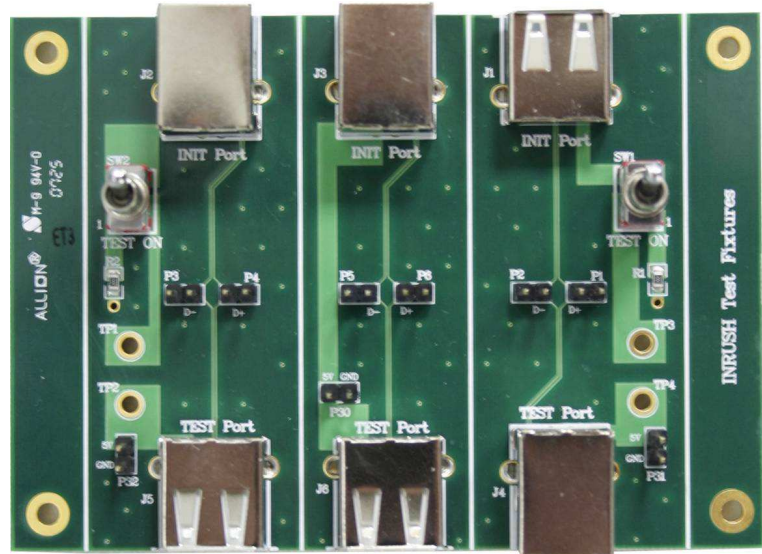




USB Inrush (SQiDD) Test Fixture

Part No.: USB-TF-INR



Application

- Design for Full/ Low Speed Device and Host Signal Quality Test
- Design for Full/ Low Speed Device Inrush Test
- Related with “**USB-IF Full and Low Speed Electrical and Interoperability Compliance Test Procedure**” Revision 1.3 Section B.1
- SW1 and SW2 is for Inrush Test. You should keep them on “TEST ON” when doing Full/ Low Speed Signal Quality Test
- “INIT Port” is for link with Host, and “TEST Port” is for link with Device Under Test

Specification

- 98mm x 70mm x 1.4mm
- Operating Temperature 0° ~ 55° C

Contact Information:

Tel: +886-2-26557877 E-mail: service@allion.com

URL: http://www.allion.com/test_tool_usb.html