

# Allion Smart Memory Card and USB Switch



Allion Smart Switch is designed for USB and Memory Card related devices testing in R&D, DVT, QA stages. The four Bi-Way USB Master/Slave ports and four Memory Card slots enables you quickly connect the devices you need to test with. The software controlled switch operation helps to reduce the testing time and avoid unnecessary operation error.

**Part No: SM-MC-USB-SW**

## Application

### USB Switch

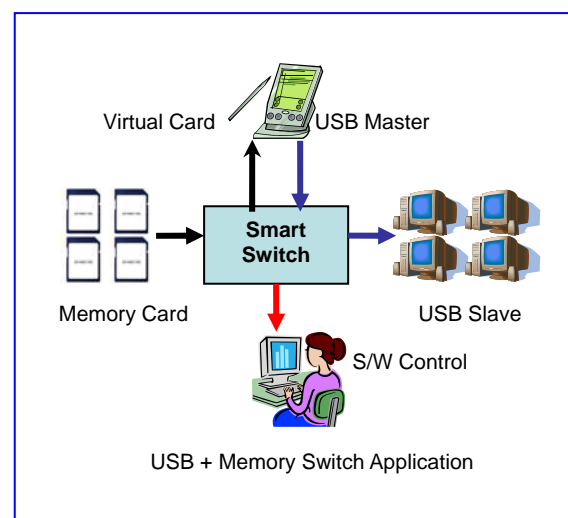
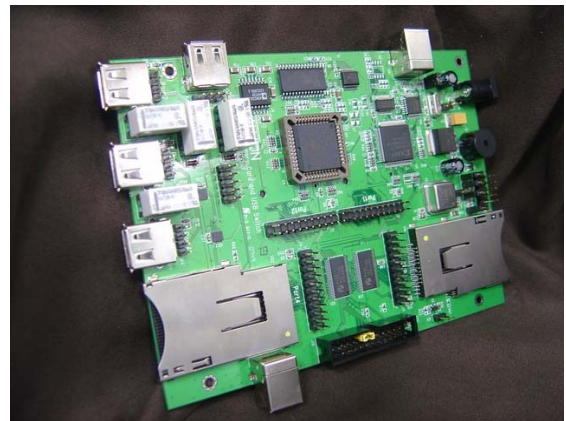
- Bi-way Master USB switch with 4 Slave USB
- Simulate USB Hot-Plug (Fully stop signals when disable)
- Simulate USB Charge/ Dis-Charge for Mobile Device
- Software control for automation
- Can work with Memory Switch simultaneously
- Fully integration with TestQuest™ Testing Automation tools

### Memory Card

- One-way Master switch with 4 Slave Memory Slots
- Simulate Hot-Plug actions
- Support most popular card type
- Software control for automation
- Can work with USB Switch simultaneously
- Fully integration with TestQuest™ Testing Automation tools

## Specification

- Dimension: 110mm x 150mm x 1mm
- Operating Temperature: 0° ~ 55° C
- Max Power – USB: 5.25V/1A
- Max Power – SD: 5V/100mA
- Switch Delay: 500ms
- USB 2.0 High Speed supported
- USB port: Host x1, Master x1, Slave x4
- Memory Card port x4
- Support SD/MicroSD/MMC/MS/MS Duo



### Contact Information:

Tel: +886-2-2655-7877 E-mail: [service@allion.com](mailto:service@allion.com)

All the trademarks and registered trademarks are property of their respective corporations.